

StarBurn: Image Burner Wizard

August 8, 2007



Rocket Division Software
www.RocketDivision.com

Copyright © Rocket Division Software 2001-2007. All rights reserved.



MANUAL 4

CONTACTS..... 13

COPYRIGHT

Copyright © Rocket Division Software 2001-2007. All rights reserved. No part of this publication may be reproduced, stored in a retrieval system, or transmitted in any form or by any means, electronic, mechanical, photocopying, recording or otherwise, without the prior written consent of Rocket Division Software.

TRADEMARKS

“StarBurn”, “Rocket Division Software” and the StarBurn and the Rocket Division Software logos are trademarks of Rocket Division Software which may be registered in some jurisdictions. All other trademarks are owned by their respective owners.

CHANGES

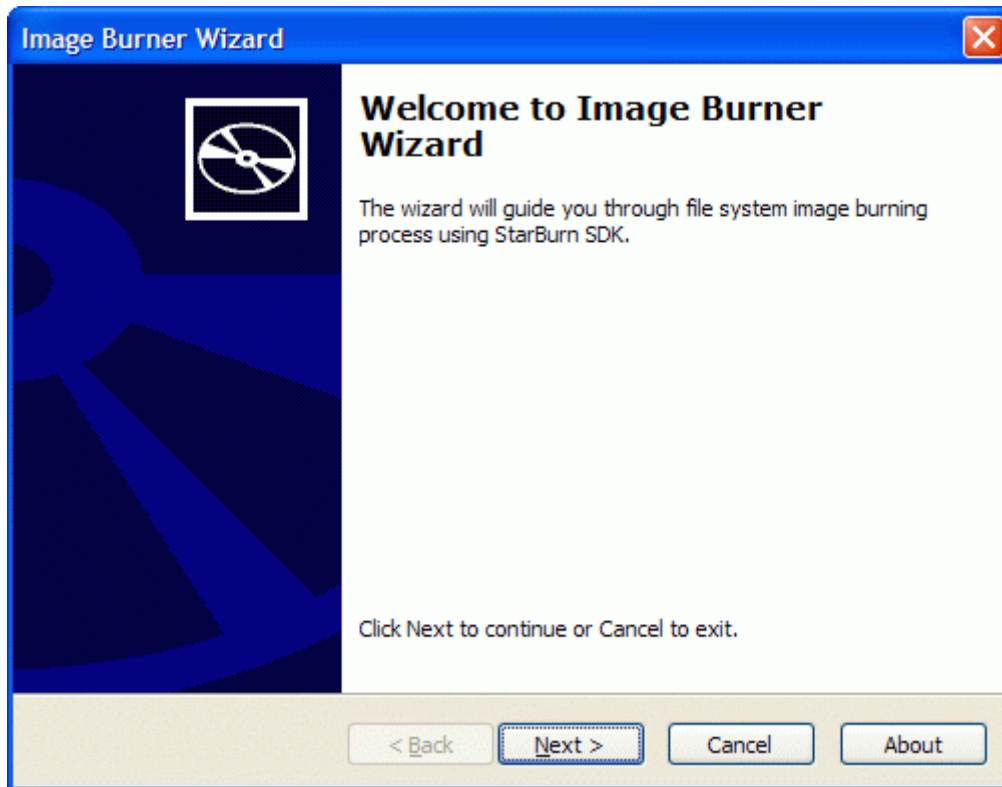
The material in this document is for information only and is subject to change without notice. While reasonable efforts have been made in the preparation of this document to assure its accuracy, Rocket Division Software assumes no liability resulting from errors or omissions in this document, or from the use of the information contained herein. Rocket Division Software reserves the right to make changes in the product design without reservation and without notification to its users.

TECHNICAL SUPPORT AND SERVICES

If you have questions about installing or using this software, check this and other documents first - you will find answers to most of your questions here or there. If you need further assistance, please contact us.

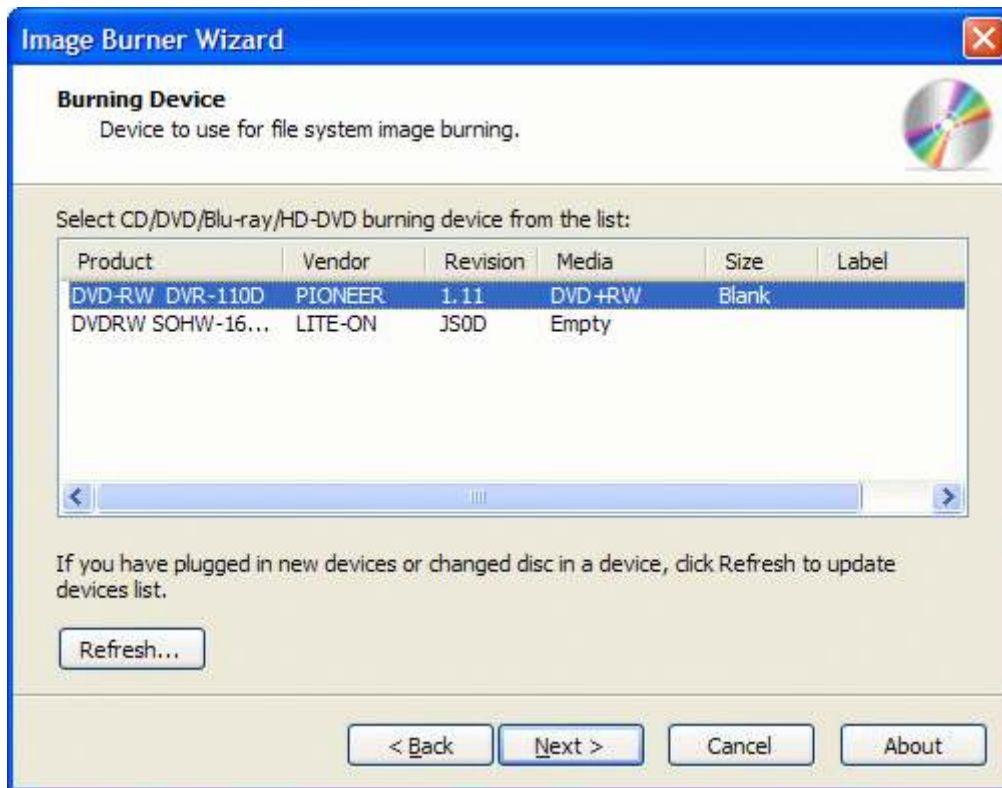
MANUAL

Welcome to the **Image Burner Wizard** dialog appears.



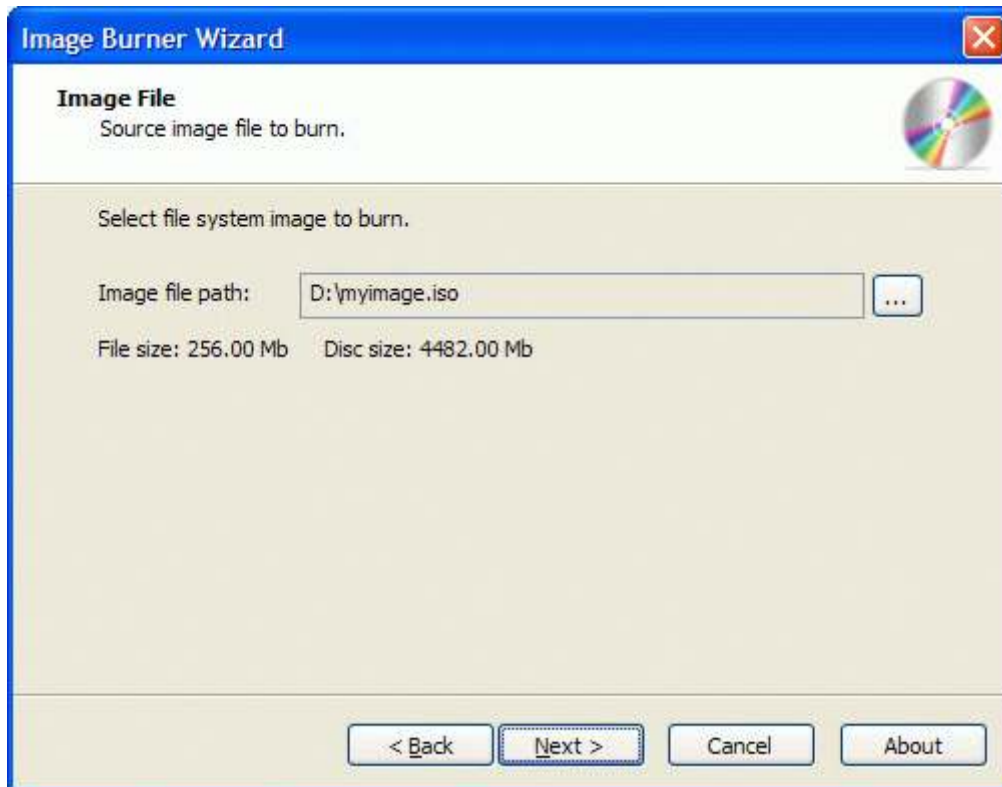
Press the **Next** button to continue.

If the disc hasn't been inserted into the drive yet please insert it and press **Refresh** button. Choose a burner from the list (the one you have inserted disc to).



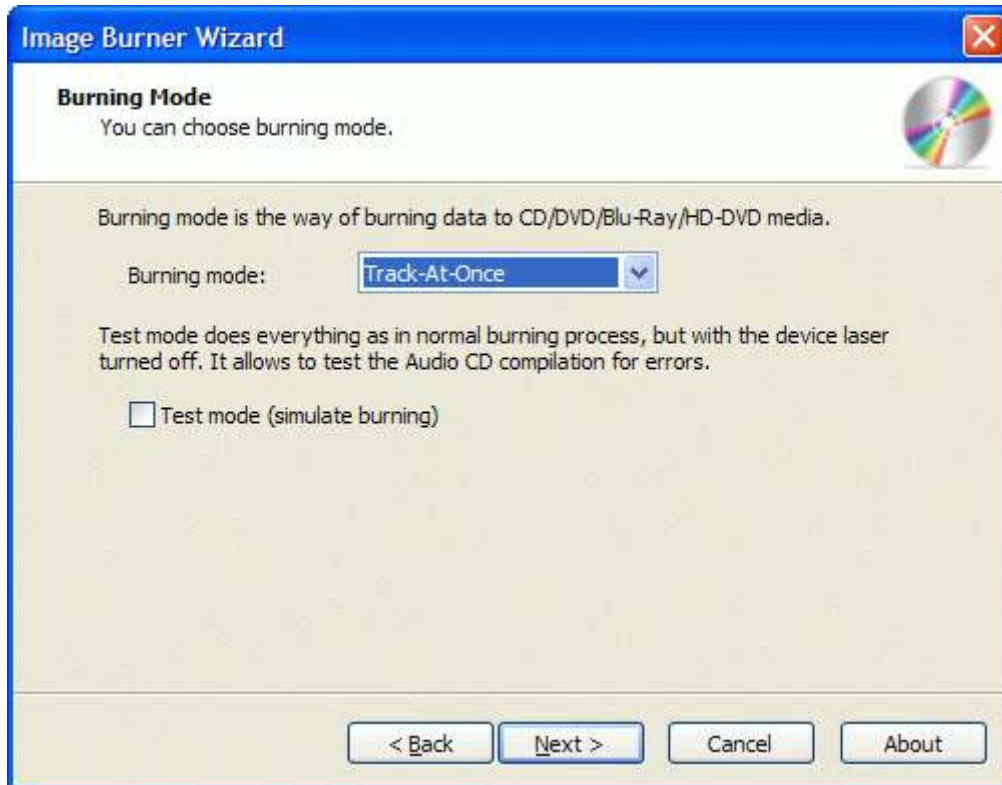
Press the **Next** button to continue.

Please specify the image file name you wish to burn.



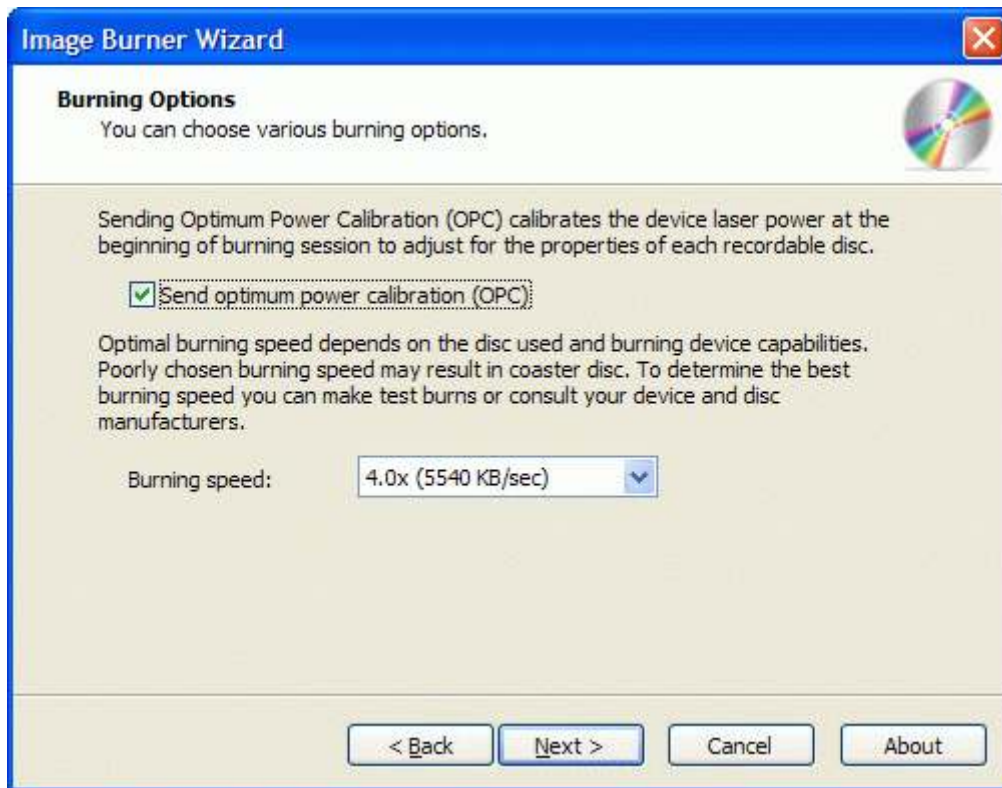
Press the **Next** button to continue.

Choose the burning mode. Optionally you can enable **Test mode**. It is useful because it performs all of the burning steps but with laser at the low power. So you can check for burning errors to prevent media damage.



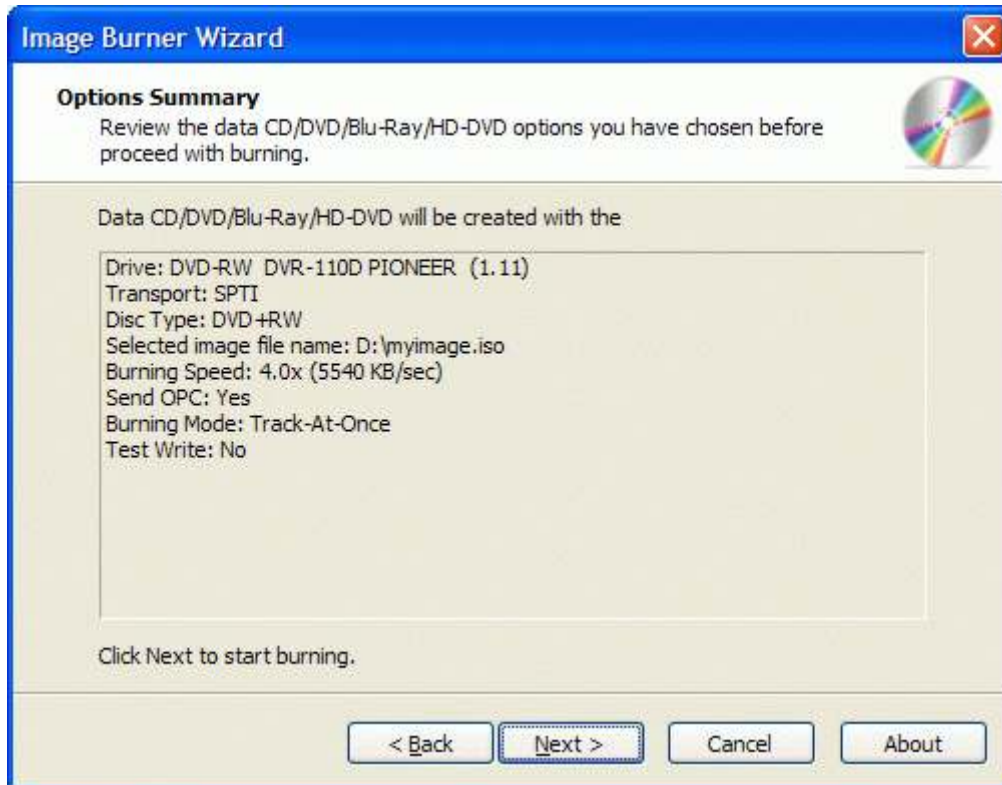
Press the **Next** button to continue.

Optionally you can check/uncheck **Send OPC** checkbox. Select desired speed from the list of supported burning speeds.



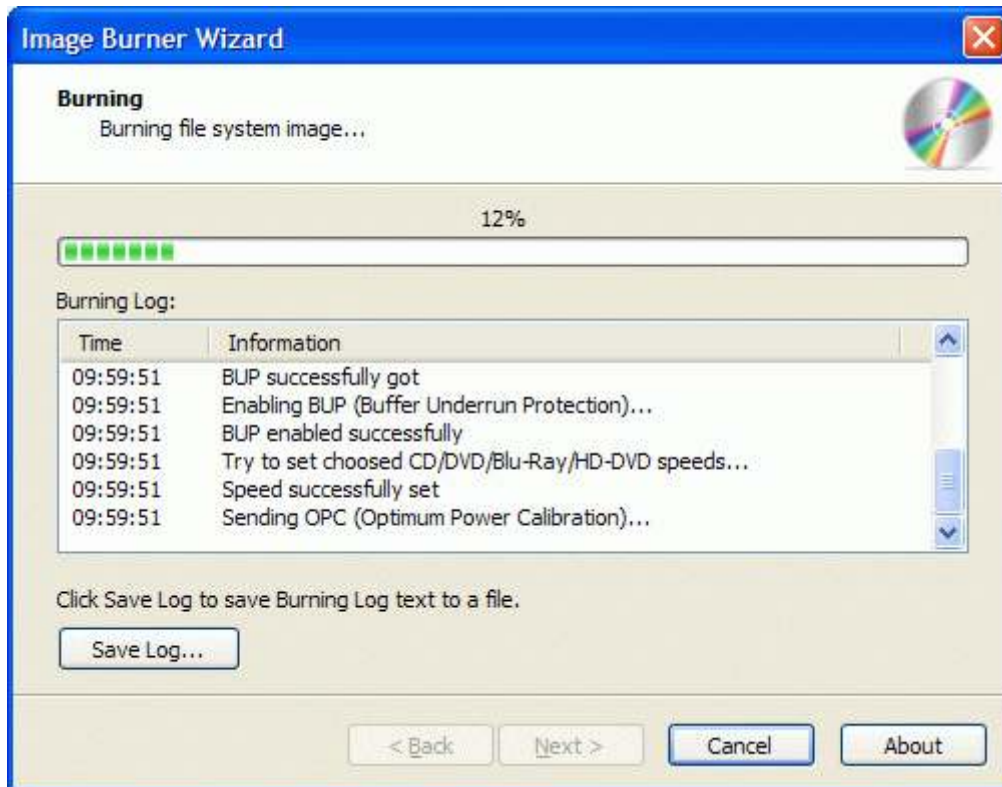
Press the **Next** button to continue.

Please review the options summary and make sure all of the options are correct ones (have been set by you on the previous pages). If you need to apply any changes press the **Back** button to toggle wrong settings.



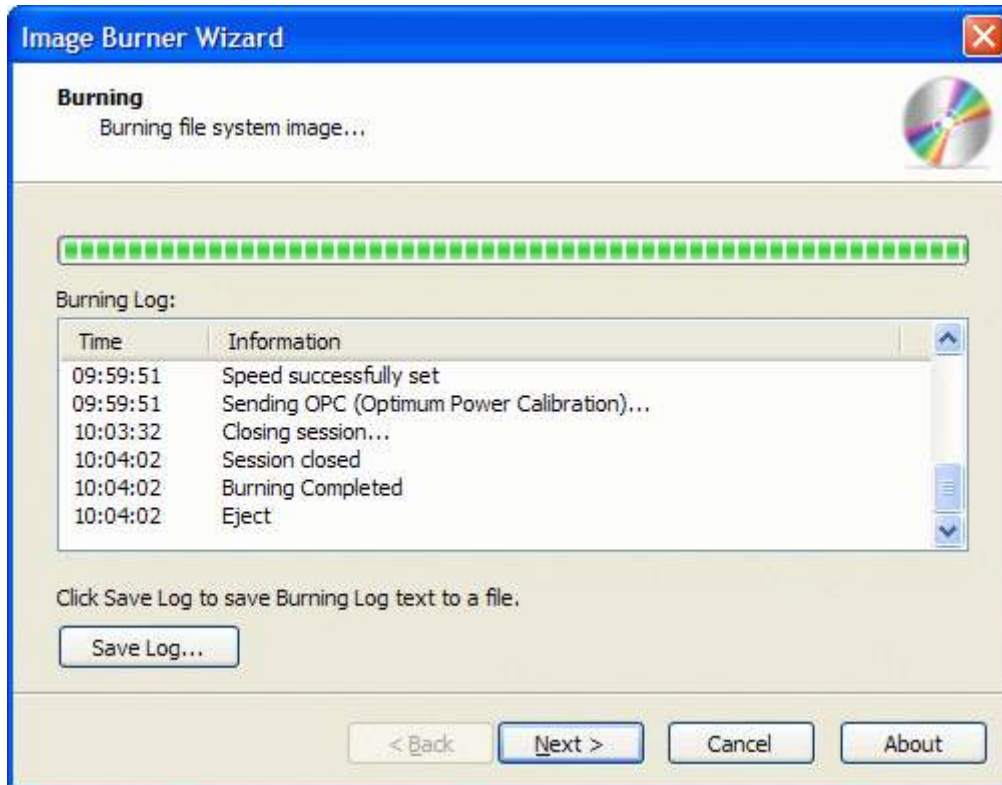
Press the **Next** button to begin burning.

Disc burning is in progress.



Press the **Cancel** button to cancel burning or just wait for the process completion.

When burning is complete optionally you can save the log by pressing **Save Log** button. This option is useful when burning problems are occurred and you'd like to send failed operation log to the support.



Press the **Next** button to continue.

Completing the **Image Burner Wizard** dialog appears.



Press the **Finish** button to exit the wizard.

CONTACTS

Support E-mail: Support@RocketDivision.com

Support Forum: www.RocketDivision.com/forum

Support FAQ: www.RocketDivision.com/faq.html

Sales E-mail: Sales@RocketDivision.com

Phone: +38 067 53 222 33, +38 067 53 222 53

Fax: +38 044 414 8717

Rocket Division Software
04210, Kyiv, Ukraine
Heroes of Stalingrad Str. 18B/Office 21
www.RocketDivision.com